

# ASHMOLEAN

MUSEUM OF ART AND ARCHAEOLOGY UNIVERSITY OF OXFORD

**FEB–MAY 2018**

---

America's Cool Modernism

Lates • China Festival

Free Displays • Talks

Family Fun • Courses

Gallery Activities • Music

---



# CONTENTS

---

<b>SPECIAL EXHIBITION</b> .....	<b>4</b>
<b>FREE EXHIBITIONS &amp; DISPLAYS</b> ....	<b>6</b>
<b>TALKS</b> .....	<b>8</b>
<b>COURSES &amp; WORKSHOPS</b> .....	<b>12</b>
<b>GALLERY ACTIVITIES</b> .....	<b>13</b>
<b>FAMILY FUN</b> .....	<b>14</b>
<b>FESTIVALS</b> .....	<b>16</b>
<b>LATES</b> .....	<b>17</b>
<b>TOURS</b> .....	<b>18</b>
<b>MUSIC</b> .....	<b>19</b>

---

## Cover Image:

*Dawn in Pennsylvania* detail, oil on canvas 1942,  
Edward Hopper. © Terra Foundation for American Art

Beaumont Street  
Oxford OX1 2PH  
Telephone: 01865 278 000  
**[www.ashmolean.org](http://www.ashmolean.org)**



Supported by  
 **The National Lottery**®  
through the Heritage Lottery Fund



Supported by  
 **ARTS COUNCIL**  
**ENGLAND**

## OPENING TIMES

Tue–Sun 10am–5pm  
Open until 8pm last Friday of the month  
Bank Holiday Mondays 10am–5pm

## BOOKING

Event information is correct at time of printing,  
but may be subject to change.

### In person

Buy tickets to our exhibitions, talks, events and  
activities at the Museum Information Desk, in advance  
or on the day during museum opening hours.

### Online

**[ashmolean.org/tickets](http://ashmolean.org/tickets)**

Secure 24h online booking.  
Booking fee per transaction: £1

### Telephone & Email

**01865 278112**

Mon–Sun, 11am–3pm

Please leave a voicemail, or email

**[onlinetickets@ashmus.ox.ac.uk](mailto:onlinetickets@ashmus.ox.ac.uk)**.

We aim to respond within 24hrs.

Booking fee per transaction: £2

### Booking fees

There is no booking fee when tickets are purchased  
in person from the Information Desk. Booking fees  
correct at the time of printing.

## ACCESSIBILITY

There is access throughout the Museum except for  
the lower-ground floor of the Cast Gallery which is  
regrettably only accessible by stairs due to the layout  
of the historic building.

There are ramps into the building and lifts to all other  
floors. Wheelchairs are available. We can arrange  
free touch tours and description tours for visitors  
with visual impairments and those who need an  
accompanied visit. For more information, call  
01865 278015.

## SOCIAL

Discover more inspiration, news and  
exclusive images on our social channels.  
**@AshmoleanMuseum**

Edited by Emily Jarrett.

---

The Ashmolean is the University of Oxford's museum of art and archaeology, opened in 1683. It is the oldest public museum in the world and has incredibly rich and diverse collections from around the globe, ranging from Egyptian mummies and classical sculpture to the Pre-Raphaelites and modern art.

---

# SPRING AT THE ASHMOLEAN

*Xa Sturgis, Director*

---



As the days begin to lengthen and winter draws to a close, we look forward to an exciting spring season at the Ashmolean.

In March, we open our new major exhibition *America's*

*Cool Modernism: O'Keeffe to Hopper*, which brings together a remarkable collection of paintings, prints and photographs many of which have never been seen in the UK before. This revelatory exhibition explores a particular aspect of American art in the interwar years characterised by its clean, stark, 'cool' detachment. The show explores how American artists responded to both European modernism and the excitements and anxieties of the modern American city and the machine age. It features key works by familiar names but among its highlights are iconic paintings by Charles Demuth and Charles Sheeler, two remarkable artists less well known to a UK audience.

Coinciding with the new exhibition, we will be hosting *American Cool*, a month-long festival in collaboration with Blackwell's Bookshop celebrating American art, literature, music, drama and film from the 1920s–1940s throughout May. We will finish the festivities with a Live Friday, where you will have an opportunity to immerse yourself in the America of the interwar years; explore the exhibition after hours and take part in activities channelling the roaring Twenties

through to The New Deal. We are also introducing regular Ashmolean After Hours, keeping our doors open until 7pm on the last Friday of every month.

To celebrate Chinese New Year we will also be hosting a China Festival on the 17 & 18 February. This weekend of performances, workshops and activities focussed on the Ashmolean's extraordinary Chinese collections will include something for all ages from live music and talks, to magical stories and more.

February 2018 also marks the 100th anniversary of the Representation of the People Act 1918, which enabled all men and some women over the age of 30 to vote for the first time. Look out for some special events highlighting this significant date throughout the year, accompanied by this symbol ♦.

Find out about each of these events and the rest of our Spring programme at [ashmolean.org](http://ashmolean.org).

## THANK YOU FOR YOUR HELP!

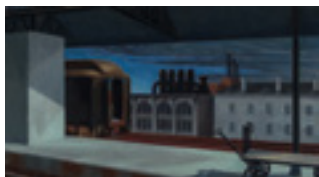
The Ashmolean depends on its many supporters and donors in everything it does. Your support is important to us and has enabled us to inspire and educate a new generation of visitors.

[www.ashmolean.org/support](http://www.ashmolean.org/support)



❖ I Saw the Figure 5 in Gold, 1928, Charles Demuth © Metropolitan Museum of Art, New York

# SPECIAL EXHIBITION



📌 *Dawn in Pennsylvania*, oil on canvas 1942, Edward Hopper. Terra Foundation for American Art.

## AMERICA'S COOL MODERNISM

O'Keeffe to Hopper

23 March 2018 – 22 July 2018

**This will be the first exhibition to explore the 'cool' in American art in the early 20th century, from early experiments in abstraction by artists like Georgia O'Keeffe, Arthur Dove and Paul Strand to the strict, clean precisionist paintings of Charles Sheeler and Charles Demuth.**

Showcasing significant examples of American art produced during the roaring 1920s and Depression-era 1930s, some for the very first time in the UK, the works on display share a smooth, crisp, clean appearance and a cool, impersonal treatment, an apparent detachment. They evoke a world in which human beings have been removed or substituted.

The Metropolitan Museum of Art has supported the exhibition with major loans, in addition to works from the Terra Collection and other international collections. This exhibition is organised by the Ashmolean Museum and the Terra Foundation for American Art.

The exhibition and its publication are made possible with the support of the Terra Foundation for American Art.

### EVENTS

EXHIBITION  
EVENT

#### Exhibition Tours

Tuesdays & Thursdays,  
3.30–4.15pm

#### Late Opening Hours

Fri 30 Mar & 27 Apr to 7pm  
Fri 25 May to 10pm  
Fri 20 & Sat 21 July to 7pm

#### American Cool Festival

Join us for a month of festivities celebrating American art, literature, music, drama and film from the 1920s–1940s. See page 16.

**For more exhibition events see pages 8–10, & 16–17.**

## TERRA

FOUNDATION FOR AMERICAN ART

Additional support by:

Mr Barrie and Mrs Deedee Wigmore  
Huo Family Foundation (UK) Limited  
Marica and Jan Vilcek  
The Patrons of the Ashmolean

Media partner

**The Telegraph**

## TICKETS

**Standard: £13.50 with Gift Aid, £12.25**  
**Concessions: £12.50 with Gift Aid, £11.25**  
**FREE for Ashmolean Members, University of Oxford students and under-12s**

**Book now** [www.ashmolean.org/americascoolmodernism](http://www.ashmolean.org/americascoolmodernism)

MEMBERS  
GET IN  
FREE

# FREE EXHIBITIONS & DISPLAYS

Temporary displays from our vast collection, plus highlights from recent research.

---



## Michelangelo

6 Mar 2018–2 Apr 2018

Gallery 8

Explore a remarkable group of drawings by Michelangelo which have recently returned from New York where they were a central feature of an exhibition at the Metropolitan Museum of Art. We are offering a unique opportunity for a four-week period to view these drawings as a selection spanning Michelangelo's career before they return to the graphic art collections in the Western Art Print Room.

🔗 *Ideal Head*, red chalk, c. 1520–25, Michelangelo

---



## The Tale of Prince Vessantara

27 Mar 2018–9 Sep 2018

Gallery 29

The most popular story in the Buddhist world, the *Vessantara Jataka* recounts the Buddha's previous incarnation as Prince Vessantara. Symbolising the virtue of generosity, this *jataka*, or story of one of the Buddha's past lives, is often depicted in South Asian and Southeast Asian art. This display showcases drawings, paintings and wooden panels from Myanmar (Burma) and Sri Lanka dating from the 19th century.

🔗 Detail of fan painting depicting the *Vessantara Jataka*, Myanmar, 19th century.

---



## An Ancient Landscape: Iron-Age and Roman finds from the Berkshire Downs

16 Jan 2018–29 Apr 2018

Gallery 7

This new display exhibits archaeological finds discovered by metal-detectorists on the Berkshire Downs. Explore the story of this site through objects such as coins, pottery and metalwork, and learn about its significance to local people from the late Iron Age to the end of Roman Britain.

🔗 Silver denarius of Julius Caesar, 47–46 BC





## From Drawing to Painting in the Italian Renaissance

9 Jan 2018– 2 Apr 2018

Gallery 8

The Slade art history lecture series has run at the University of Oxford since 1870. This year, we are showing a display in conjunction with the lectures by Professor David Ekserdjian, which explores how Italian artists produced whole sequences of preparatory drawings to hone the form and content of their major works.

🔗 *Composition of a Sibyl and Prophets*, Pordenone (c.1483–1539)



## ◆ A Century of Women in Chinese Art

1 May 2018–7 Oct 2018

Gallery 11

Over many centuries, Chinese painters have been inspired by everyday life, traditional literature and folk religion to portray women in this world and beyond. This spring exhibition in the Chinese Painting Gallery features a diverse selection of representations of women in Chinese art over the past 100 years.

🔗 *Teresa Teng in Four Seasons: Spring*, 2005, © Wilson Shieh



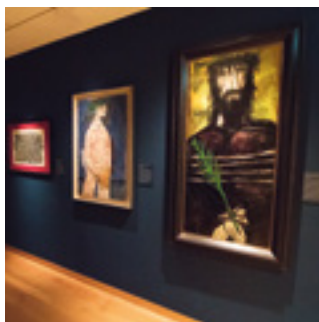
## Qu Leilei: A Chinese Artist in Britain

Until 15 April 2018

Gallery 11

Contemporary Chinese artist Qu Leilei (b.1951) was a founding member of the avant-garde 'Stars Group' in the late 1970s, and emigrated to England in 1985. This exhibition shows his progression from calligraphic collage to an exploration of a new vocabulary of ink language blending lively brushwork with western technique.

🔗 *The Future Remains in Our Own Hands*. © Qu Leilei, 2014.



## Old Traditions New Visions: Art in India and Pakistan after 1947

Until 18 Mar 2018

Gallery 29

After the political freedom gained in 1947, Indian and Pakistani artists faced a significant challenge to express the new nations' distinctive character and visions. Artists sought new modes of expression, engaging with modern European art movements but remaining oriented towards their own traditions.

🔗 View of display, Gallery 29

# TALKS

Join us for one of our talks on art and archaeology delivered by experts in their field.

## Cool Modernism Inside Out

With Miguel de Baca, Terra Foundation Visiting Professor of American Art at the University of Oxford  
Sat 19 May, 11–12pm, Lecture Theatre  
Tickets: £7/£6 Members & concessions, booking essential.

America between the World Wars both enjoyed and challenged the prevailing notion that it was the land of inclusion so apparent to previous generations. Indeed, the United States was then, as now, a nation of contradictions—the flavour of abundance versus the bitterness of ruin, the cosmopolitan delights of the city versus the rich, regional character of the vast country. This lecture examines how modernism afforded visual artists new mediums and methods to deliberate upon the question of what it meant to be American.



© Ori Sadeh

EXHIBITION  
EVENT

## WEEKDAY TALKS

TICKETS: £7/£6 Members & concessions, booking essential.

### ◆ Fighting on Different Fronts: Representations of Women in the First World War

With Peter Vass, Oxford Brookes University  
Fri 23 Feb, 1–2pm, Lecture Theatre  
Drawing on previously unpublished material, Peter Vass examines the way women were represented in propaganda in the First World War, and considers how these 'altered images' marked a change in perception of women and their role in society.

### On the Ocean: The Mediterranean and the Atlantic from Prehistory to 1500 AD

With Sir Barry Cunliffe, Emeritus Professor of European Archaeology, University of Oxford  
Fri 2 Mar, 1–2pm, Lecture Theatre  
For humans, the sea has always been an alien and dangerous environment. So how and why did we become seafarers? Distinguished archaeologist Sir Barry Cunliffe explores the evidence, bringing together years of research and recent findings.

### Charles Sheeler: Time and the City

With David Corbett Peters, Professor of American Art and Director of the Centre for American Art, Courtauld Institute  
Wed 11 Apr, 1–2pm, Lecture Theatre  
Explore American artist Charles Sheeler's 1910s and 20s paintings, photographs, and graphic works with a particular focus on two apparently contrasting but intertwined places; New York City and Doylestown, Pennsylvania.

EXHIBITION  
EVENT

### Leaving the Body: The Empty Spaces of American Modernism

With Lauren Kroiz, Assistant Professor of Art History at the University of California, Berkeley, Thu 12 Apr, 3.45–4.45pm, Lecture Theatre  
*America's Cool Modernism* shows that excluding figural content does not mean neglecting the social situation that influenced the lives of everyday Americans. Lauren Kroiz discusses the socio-political context of 1920s and 30s America, in which immigration restrictions and segregation were at their height.

EXHIBITION  
EVENT



## By Land, Sea and Air: Winning the First World War through Art

With Peter Vass, Oxford Brookes University  
Fri 20 Apr, 1–2pm, Lecture Theatre  
Using material from the most wide-ranging propaganda exercise in the First World War, Peter Vass looks at how British servicemen in the army, navy, and the newly emerging air force were depicted by artists for propaganda purposes.

## Edward Lear: Visual and Verbal Conversations

With Professor Matthew Bevis, University of Oxford  
Fri 27 Apr, 1–2pm, Lecture Theatre  
Edward Lear's achievements – as a nonsense poet, scientific illustrator, and landscape painter – have often been studied in isolation from each other. This lecture explores the remarkable interconnections between them, and shows how he attempts to forge new conversations between paint and print, images and words.

## America's Cool Modernism: Curator's View

With Dr Katherine Bourguignon, Exhibition Curator  
Terra Foundation for American Art  
Thu 3 May, 1–2pm, Lecture Theatre  
What is 'cool modernism' and why does the term apply to American art of the 1920s and 1930s? This lecture provides an overview of the artists and themes of the exhibition and an analysis of the peculiar reticence, precision, and detachment found in artworks of this period.



## Think Human: Stimulate Your Senses

Wed 23 May, 2–4pm, Education Studio  
With Professor Christiana Payne, Dr Marika Leino and Dr Ian Holgate, Oxford Brookes University  
Think art is just about looking? Think again! Join us to find out how the other four senses – hearing, taste, smell and touch – are activated in our encounters with painting and sculpture. Part of Oxford Brookes University's Think Human Festival 2018.  
**Free, booking essential.**

To book, email [thinkhuman@brookes.ac.uk](mailto:thinkhuman@brookes.ac.uk)

## Annual Roger Moorey Lecture

Fri 1 Jun, 5.30–7pm, Wolfson College  
A lecture and reception in honour of Dr Moorey, Keeper of Antiquities at the Ashmolean, 1983–2002

## WEEKEND TALKS

TICKETS: £7/£6 Members & concessions, booking essential.

## The Neurophysiology of Aesthetics: Brain Awareness Week Public Lecture 2018

With Dr Zoi Kapoula, Research Director in Cognitive Neuroscience at the Centre National de la Recherche Scientifique, Paris  
Sat 17 Mar, 1–2pm, Lecture Theatre  
Eminent French neuroscientist Zoi Kapoula discusses the ways that museum-based research is helping us understand the complex mechanisms of the human brain. This lecture is presented in partnership with the Ashmolean University Engagement Programme and Dr Chrystalina Antoniadou of the Nuffield Department of Clinical Neurosciences. **Free, booking not required.**

## Greek Vase Painters and the Trojan War

With David Studdard, Historian and Author  
Sat 24 Mar, 2–3pm, Lecture Theatre  
The Trojan War inspired the works of many Greek poets and dramatists. Using a wealth of illustrations, David Studdard shows how vase painters, too, responded to the myths of Troy in ways that were moving, funny, and sometimes heart-stoppingly profound.

## The History of Buon Fresco

With Alan Pascuzzi, Artist and Art Historian  
Sat 14 Apr, 11–12pm, Lecture Theatre  
From pre-history to the Renaissance and to the present day, this talk will explain in-depth the art of painting in fresco. Explore techniques used, the history of the material, and the practical aspects of its use, including conservation and restoration.

## Cracking the Egyptian Code: The Life of Jean-François Champollion

With Andrew Robinson, Author  
Sat 14 Apr, 2–3pm, Lecture Theatre  
Explore the life of Jean-François Champollion; a teenage professor of ancient history, supporter of Napoleon, explorer, and most notably, decipherer of Egyptian hieroglyphics.

## The Perfect Generosity of Prince Vessantara

With Professor Richard Gombrich, University of Oxford, Sat 28 Apr, 11–12pm, Lecture Theatre  
Learn about the concept of generosity as told through this famous Buddhist story, which explores the struggle of reconciling one's own quest for spiritual progress with familial and societal values.

## AFTERNOON TEA TALKS

TICKETS: £11/£10 Members & concessions, inc.  
afternoon tea, booking essential.

### ◆ **Vermeer's Women**

With Alice Foster, Art Historian  
Thu 8 Mar, 2–4 pm, Lecture Theatre  
To mark International Women's Day Alice Foster looks at the way Dutch artist Johannes Vermeer depicted women, from the lowly kitchen maid to the mythological Diana, and everything in between.

### ◆ **Medieval Women of Power and Influence: Three-Part Series**

With Tim Porter, Historian  
The Middle Ages may be seen as a time of military machismo and paternalism; yet this lecture series explores three women who bucked the trend, rose to power and prominence, and shaped the fortunes of this country.

### ◆ **Æthelflæd: Lady of the Mercians**

Fri 23 Mar, 2–4pm, Lecture Theatre

### ◆ **Margaret of Scotland: Queen & Saint**

Fri 13 April, 2–4pm, Lecture Theatre

### ◆ **Empress Matilda and the Crown of England**

Fri 4 May, 2–4pm, Lecture Theatre

### **The Enigmatic Etruscans: Two-Part Series**

With Linda Farrar, Archaeologist and Lecturer  
The Etruscans had a rich and distinctive culture, once dominating Italy before they were overshadowed by the rise of Rome. This series looks at the material culture of this enigmatic people to gain a better understanding of their lives.

### **Etruscan Cities: Houses for the Living and the Dead**

Wed 28 Mar, 2–4pm, Lecture Theatre

### **Etruscan Frescoes: Paintings Full of Life**

Wed 25 Apr, 2–4pm, Lecture Theatre

### **Slow Art Day**

Sat 14 Apr, 2–4pm, Gallery 21

With Jude Barrett & Lynne Ward,  
Ashmolean Education Team

Slow Art Day is a global event with a mission to help more people discover the joy of looking at art slowly. Join our tour of the Western Art Galleries and lose yourself in five works, followed by an opportunity to discuss over tea and cake.

### **David Hockney**

With Alice Foster, Art Historian

Thurs 24 May, 2–4pm, Lecture Theatre

Explore the work of painter, photographer, and printmaker David Hockney who is regarded as one of the most innovative artists of our time. Learn about his use of stillness and movement, as well as colour and simplified forms.

## STUDY ROOM TALKS

TICKETS: £6/£5 Members & concessions,  
booking essential.

### ◆ **Portraits of French Women Revolutionaries**

With Sandrine Lacorie, Print Room Volunteer  
Wed 28 Feb, 3.45–4.45pm, Meet in Gallery 21  
Discover portraits of the great female revolutionaries who marked – and even changed – the course of French history.

### ◆ **Making their Mark: Works by Female Printmakers**

With Rachel Skokowski, Former Print Room Intern  
Thu 19 Apr, 3.45–4.45pm, Meet in Gallery 21  
Often overshadowed by more well-known male artists, female printmakers nevertheless helped shape the history of printmaking. Learn more about these remarkable women by exploring prints from the 17th century to today.

### **Clay Live: The Life and Work of Ewen Henderson**

With Anthony Shaw, Collector and Ceramics Expert  
Sat 5 May, 3–7pm, meet in Gallery 21  
Join us for a study room session with Anthony Shaw looking closely at the work of Ewen Henderson from private collections as well as contemporary works. Followed by a private view of the Ewen Henderson exhibition at Oxford Ceramics Gallery.

£15/£12 concession, booking required.



# MEMORIES ARE MADE HERE

From start to finish, our dedicated team will ensure that your celebration is every bit as special, individual and memorable as you want it to be. Your wedding journey starts here – let's begin a conversation.

**E** [events@ashmolean.org](mailto:events@ashmolean.org)  
**W** [ashmolean.org/weddings](http://ashmolean.org/weddings)  
**T** 01865 610407

© Martin Phelps.

# EATING AND DRINKING

## ROOFTOP RESTAURANT

Tue–Sun 10am–4.30pm  
Thu, Fri & Sat 10am–10pm

**Find us on Level 4**

**[www.ashmoleanrooftop.com](http://www.ashmoleanrooftop.com)**

**MEMBERS  
GET 10%  
OFF**

## CAFÉ

Tue–Sun, 10am–4.30pm

**Find us on Level -1**

**T 01865 553823**



# COURSES & WORKSHOPS

*Find your creative muse with a short course or workshop.*

**For the most up-to-date list of our courses visit [www.ashmolean.org/courses](http://www.ashmolean.org/courses)**

## **Royal Drawing School at the Ashmolean**

Every Sun, 14 Jan–25 Mar (except 11 Feb), 2–4pm, Galleries

A course from The Royal Drawing School for young artists aged 15–18. Expand your fine art practice or add to your portfolio by drawing from observation in the museum, from life models and the local area.

[£150. Booking: \[royaldrawingschool.org\]\(http://royaldrawingschool.org\)](http://£150.Booking:royaldrawingschool.org)

T: 020 7613 8568

## **Create a Renaissance Fresco**

With Alan Pascuzzi, Art Historian and Artist

Sat 14 Apr, 1–4pm, Education Studio

Using the same materials as the Renaissance masters, reproduce the entire fresco process from beginning to end. Start with a preparatory cartoon, mix paint with boar's-hair brushes and paint on lime-based mortar to get a unique insight into the skill of the Renaissance masters.

[£55/£50 concessions](http://£55/£50 concessions)

## **iPad for Artists**

With Martin Beeke, Artist

Fri 20 Apr, Fri 27 Apr, Fri 4 May, 10.30am–1:30pm

Education Studio

A three-part practical course to gain confidence in drawing, painting and image-making using popular drawing apps on an iPad. Learn to use your iPad as a sketchbook, drawing the Ashmolean collection using layers, templates and more.

[£95/£90 concessions](http://£95/£90 concessions)

## **Medieval Embroidery**

With Tanya Bentham, Medieval Embroiderer

Sun 29 Apr, Sun 24 Jun, Sat 29 Sep, 10.30am–4pm

Education Studio

Learn a variety of medieval embroidery techniques from appliqué to opus anglicanum to make your own alphabet scroll of medieval Oxford.

[£220/£210 concessions](http://£220/£210 concessions)

## **Early Tudor Needlework**

With Lynn Hulse and Nicola Jarvis, Ornamental Embroidery

Fri 11 May & Sat 12 May, 10.30am–4pm,

Education Studio

Working in silk and metal threads, stitch a floral motif inspired by the herbal and bestiary model book *Ashmole 1504*, containing embroidery patterns dating from the early 16th century. Includes a visit to the Bodleian Library to see the original manuscript.

[£185/£180 concessions](http://£185/£180 concessions)

## **Mixed Media Inspired by Georgia O'Keeffe**

With Kieran Stiles, Artist

Wed 2 May, 10.30am–4pm, Education Studio

Explore the mixed-media techniques in Georgia O'Keeffe's figure painting with artist Kieran Stiles. Working from direct observation of the figure, learn how to drop vivid ink into wet washes of watercolour in an expressive approach.

[£70/£65 concessions](http://£70/£65 concessions)

EXHIBITION  
EVENT



©John C. Cairns

# GALLERY ACTIVITIES

Add another dimension to your visit with one of our regular activities.



## Hands-On Coins

Every Saturday, 11.30am–3.30pm,  
Gallery 7

Handle historical coins from different times and places with the help of our volunteer team. Everyone welcome, but more suitable for ages 7+.

[Free, no booking required.](#)

## Archaeological Object and Coin Identification Service

Wed 7 Feb, 7 Mar, 4 Apr & 2 May  
12–3pm, Gallery 1

A monthly identification service for archaeological objects and coins, run jointly with the Portable Antiquities Scheme. Bring along your finds.

[Free, no booking required.](#)

## Poetry in the Galleries

Sat 24 Mar & Sat 19 May, 2–3pm,  
Meet in Gallery 21

Oxfordshire poets share new work written in response to the Ashmolean's collections.

[Free, no booking required.](#)



©John C. Cairns

## NEW Meet me at the Museum

Thu 22 Feb, 22 Mar, 19 Apr,  
24 May, 21 June, 2.30–4pm,  
Education Studio and Galleries  
With Helen Fountain,  
Reminiscence Offices, Oxford  
University Museums

A friendly group enabling older people to explore and enjoy the Ashmolean. The group is Dementia Friendly and light refreshments will be served.

[Free, no booking required. For more information call Helen Fountain on 01865 282456.](#)

## Japanese Tea Ceremony

Thu 22 Feb, 15 Mar, 19 Apr, 24 May, 1–2pm, Gallery 36

Learn about the art of tea in Japan, enjoy a bowl of green tea and watch a demonstration in the Ashmolean's authentic Japanese tea house.

[£6/£5, booking essential.](#)

## Sketching in the Cast Gallery

Wed 7 Feb, 7 Mar, 4 Apr & 2 May,  
2–4.30pm, Gallery 14

During these afternoon sessions, the Cast Gallery's lower-ground floor study collection is open for you to do independent sketching. Please bring your own materials.

[Free, no booking required, limited to 10 people. Access: regrettably, due to the layout of the historic building, the lower-ground floor of the Cast Gallery is only accessible by stairs.](#)

## COFFEE & CAKE

Relax and recharge with coffee, cake and sandwiches in the Ashmolean Café, or enjoy the pre-theatre menu in our Rooftop Restaurant.

[www.ashmolean.org/eating](http://www.ashmolean.org/eating)

[Book now](#) [www.ashmolean.org/tickets](http://www.ashmolean.org/tickets)

MEMBERS  
GET 10%  
OFF



# FAMILY FUN

*Fun, friendly and free, this is our vibrant and creative programme of family activities.*

## ASHVENTURES

All ages welcome, particularly suitable for ages 4+. Join our regular Ashventures: stories, gallery hunts, games and crafts. 2–4pm, meet in Gallery 21

### **China: Land of Dragons**

Sat 10 Feb

### **Musical March: Strings Alive**

Sat 10 Mar

### **Ancient Greece: Olympics**

Sat 12 May

### **Victorian Art: Myths and Legends**

Sat 9 Jun

### **Islamic Ceramics: Colour and Pattern**

Sat 23 Jun

## LITTLE ASHMOLES FUN

Explore, play and learn together with a different theme each month. All welcome but particularly suitable for 3–5 year olds. 10.30–11.15am

### **Let's Draw**

Thu 1, 8 & 22 Feb, Gallery 44

### **Music and Rhythm**

Thu 1, 8, 15, 22 & 29 Mar, Gallery 39

### **Rabbit Hop**

Thu 19 & 26 Apr, Gallery 44

### **Time for Tea**

Thu 3, 10, 17 & 24 May, Gallery 40

### **Ship Ahoy!**

Thu 7, 14, 21 & 28 June, Gallery 44

## HOLIDAY FUN

### **Chinese New Year Party**

Wed 14 & Thu 15 Feb, 1–4pm, Education Studio

Take part in our Chinese New Year party with stories and craft activities to celebrate the Year of the Dog.

### **Spring Chickens**

Wed 4 Apr & Thu 5 Apr, 1–4pm, Education Studio

Join us for feathery craft activities and a search for chickens hiding around the museum.

### **Goddess of Spring**

Wed 11 & Thu 12 Apr, 1–4pm, Education Studio

Celebrate spring with craft activities and an ancient Greek and Roman story of the seasons connected to a magical painting.

### **Cityscapes**

Wed 30 & Thu 31 May, 1–4pm, Education Studio

Help us create a huge cityscape inspired by the *America's Cool Modernism* exhibition, and make a mini cityscape of your own.

EXHIBITION  
EVENT



© Ian Walbran





## SPECIAL EVENTS

### Story Makers: Family Day and Exhibition

Sat 17 Mar, 12–4pm, Education Studio

Take part in an afternoon of activities and see new work created by children from Oxford Primary Schools, inspired by the Ashmolean's collection of musical instruments. Funded by BBC Children in Need. A partnership with Fusion Arts.

### A Right Royal Adventure

Sat 24 Mar, 1–4pm, Education Studio

Explore an Oxford Civil War painting and help us create a tactile version with the Oxfordshire Association for the Blind, with special gallery activities designed by volunteers. Supported by the Heritage Lottery Fund.

### Artweeks Special: Bowls and Scrolls

With Francesca Shakespeare, Artist

Sat 28 Apr, 1–4pm, Education Studio

Work with Oxford artist Francesca Shakespeare to create a masterpiece inspired by protective amulets. The resulting artwork will be displayed 5–27 May for Oxfordshire Art weeks.

Free, no booking required.

## PICK UP FUN

Begin your museum adventure at the Information Desk.

**Every day:** family trails and sketching materials.

**Sat & Sun, 2–4pm:** Fun 'make and takes', magnifiers and torches (subject to availability).

Check out p.16 for family-friendly events.

**Drop in** All family events are free, with a suggested donation of £1 per child.

**Reminder** Children must be accompanied by an adult.

# FESTIVALS

Family-friendly festivals at the Ashmolean.



📌 Rue du Singe Qui Pêche, 1921, Charles Demuth. ©Terra.

## AMERICAN COOL

May 2018

Coinciding with our major exhibition *America's Cool Modernism: O'Keeffe to Hopper*, we present *American Cool*: a month-long festival celebrating American art, literature, music, drama and film from the 1920s – 1940s.

The programme includes: Music with 'the doyen of silent film pianists' Neil Brand in *The Silent Pianist Speaks* • Dorothy Parker Takes a Trip, a musical and dramatic foray into the world of Dorothy Parker and her era • Film series focussed on 1920s & 30s America • American Lates' – see the exhibition, listen to music, and drink 1920s-inspired cocktails after hours • American Cool LiveFriday • 'A Streetcar Named Desire' at the Oxford Playhouse • Display in Blackwell's Norrington Room matching artworks in the exhibition to American literature • See our website and pages 5, 17 and 19 for more details.

EXHIBITION  
EVENT

Festival partners: Blackwell's Bookshop, Curzon Oxford, Music at Oxford, The Rothermere American Institute & Oxford Playhouse



## CHINA FESTIVAL

Sat 17–Sun 18 Feb, 12–4pm  
Free, no booking required.

Celebrate Chinese New Year, Year of the Dog, at the Ashmolean with a free and fabulous weekend festival for all ages. Experience a Chinese lion dance, listen to live music, enjoy performances of magical Chinese tales presented by The Story Museum, join a tour, try a trail and much more!

# LATES

Stay after hours in one of Oxford's iconic locations.



© Ian Waliman

## LIVE FRIDAY: AMERICAN COOL

Fri 25 May, 7–10.30pm

Free, booking recommended

Immerse yourself in 1920s and 30s America. Explore the *America's Cool Modernism* exhibition and be inspired by *The Machine Age*, *The Great Gatsby* and *Prohibition*. At this late, we chart the 'Roaring Twenties' through to 'The New Deal' and evoke the glamour of 1930s Hollywood alongside the American rural farmstead. All American vintage dresscode: think cowboys, *Great Gatsby*, flapper girls, *Bugsy Malone* & Hollywood Starlets. In partnership with the Rothermere American Institute.

EXHIBITION  
EVENT

## ASHMOLEAN AFTER HOURS

Fri 23 Feb\*, Fri 30 Mar, Fri 27 Apr, 5–7pm  
(Fri 25 May to 10.30pm - Live Friday, see above).

We will be keeping the museum open late so you can explore after normal closing time. Take in a talk, listen to some live music, or relax at the bar with friends after work. Why not book a table for dinner at our Rooftop Restaurant?

General entry free, tickets needed for exhibition or talks. Please note that not all galleries will be open.

Visit [www.ashmolean.org](http://www.ashmolean.org) for more info.

### Contested Landscapes: Realist Paintings and their Meanings

With Elie Shamir, Artist

Fri 23 Feb, 5.45–6.45pm, Lecture Theatre

Artist Elie Shamir discusses his oil paintings from rural Israel as divided into three concentric circles; himself, his community and the greater legacy of art and culture.

### The Life and Art of Edward Hopper

With Dr Jan Cox, Art Historian

Fri 30 Mar, 5.45–6.45pm, Lecture Theatre

Learn about the life and work of Edward Hopper, a deeply private yet highly popular artist who painted America for over seven decades.

EXHIBITION  
EVENT

### The Life and Art of Georgia O'Keeffe

With Dr Jan Cox, Art Historian

Fri 27 Apr, 5.45–6.45pm, Lecture Theatre

In this talk, Dr Jan Cox discusses the life and work of celebrated 20th-century artist Georgia O'Keeffe. Discover a range of her famous abstract works, including towering skyscrapers, close-ups of colourful flowers, and landscapes inspired by her spiritual home of New Mexico.

EXHIBITION  
EVENT

### The Medium of Modernism: Watercolour in America from Homer to Hopper

With Timothy Wilcox, Curator, Writer and Lecturer

Fri 25 May, 8–9pm, Lecture Theatre

Learn about the emergence of watercolour painting in the early 20th century as a dynamic, modern means of expression. This talk will focus on the work of Winslow Homer, a father-figure in watercolour painting, and his students Georgia O'Keeffe, John Marin, and Charles Demuth.

EXHIBITION  
EVENT

*\*Please note that our new exhibition will not yet be open during the After Hours on the 23 Feb, however, a number of our other galleries will be open to explore.*

**Book now** [www.ashmolean.org/tickets](http://www.ashmolean.org/tickets)

LATES 17

# TOURS

Discover more about the treasures of the Ashmolean with one of our free tours.



© Ian Wallman

**Find out more by visiting the Information Desk or go to [ashmolean.org/tours](https://ashmolean.org/tours)**

## **Jewish Treasures at the Ashmolean**

With Rebecca Abrams, author of *The Jewish Journey*

Thu 8 Feb, 2.30–3.30pm, meet in Gallery 21

Take a 4000-year journey through the galleries of the Ashmolean to find out how Jewish life evolved from pre-biblical times up to the present day.

**Free, no booking required. Max. 20 places on a first-come, first-served basis.**

## **The Tale of Prince Vessantara: Curator's Tour**

Thu 29 Mar, 11.30am–12.15pm, meet in Gallery 29

Explore the Vessantara story and learn about its depictions in art with display curator Dr Farouk Yahya. See more about this display on pages 6 & 9.

**Free, no booking required. Max. 12 places on a first-come, first-served basis.**

## **Downstairs in the Cast Gallery Tours**

Thu & Sat, 2–2.45pm, meet in Gallery 21

Learn about the great statues and friezes of ancient Greece and Rome through the collection of plaster casts.

**Free, no booking required. Max. 12 places.**

**Led by our volunteers. Access:** regrettably, due to the layout of the historic building, the lower-ground floor of the Cast Gallery is only accessible by stairs.



© John C. Cairns

## **Highlights Tours**

Tue, Wed & Sat, 11am–12pm, meet in Gallery 21

Discover the treasures of the Ashmolean with this great introduction to the museum.

## **Lunchtime Tours**

Tue–Sat, 1.15–2pm, meet in Gallery 21

A different themed tour each lunchtime.

## **Afternoon Tours**

Wed & Thu, 3–3.45pm, meet in Gallery 21

A different themed tour each afternoon.

**Free, no booking required. All of the above are led by our team of volunteer tour guides.**

## **Interpreted Tour: BSL**

Fri 9 Mar, 10.30am–12pm, meet in Gallery 21

A themed tour with a BSL Interpreter.

**Free, no booking required.**

## **Interpreted Tour: Hands-on**

Thu 1 Mar, 10.30am–12pm, meet in Gallery 21

A hands-on session for visually impaired people.

**Free, no booking required.**

# MUSIC

*Catch a casual daytime performance or experience an evening concert in the galleries.*



## EVENING CONCERTS

### ORCHESTRA OF ST JOHN'S PROMS

£20 chair, £10 bench.

Gallery 21

Doors open at 6.30pm. Booking

essential. Tickets: [www.osj.org.uk/](http://www.osj.org.uk/)

[07775904626](http://www.osj.org.uk/07775904626)

### Music for Valentine's Day

Wed 14 Feb, 7.30–8.30pm

Ashmolean Voices with the

Paravicini Jazz Quartet

### Music from Italy

Wed 14 Mar, 7.30–8.30pm

John Lubbock, conductor

Charlie Tetley, soprano

### 'My Music' with Sir Martin Smith

Tue 10 Apr, 7.30–8.30pm

### Music from Russia

Wed 16 May, 7.30–8.30pm

Matthew Reese and John Lubbock,  
conductors

## DAYTIME CONCERTS

### Harpsichord Recital

Thu 15 Feb, 22 Mar, 26 Apr,

17 May

2–3.30pm, Gallery 44

Hear a selection of music played  
on the Kirkman Harpsichord.

Supported by the Charlotte  
Bonham-Carter Charitable Trust.

Free, no booking required.

### Music for Autism: Relaxed Concert

Wed 14 Feb, 12–1pm, Gallery 44

Join a relaxed and informal  
concert with musicians from  
the Orchestra of St John's. All  
welcome but perfect for those  
on the autism spectrum or who  
have additional needs or learning  
disabilities

Supported by Music for Autism.

Free, booking recommended.

01865 278015

[or.education.service@ashmus.](mailto:or.education.service@ashmus.ox.ac.uk)

[ox.ac.uk](http://ox.ac.uk)

### Folk Weekend Oxford

Sat 21 & Sun 22 Apr, 11am–3pm,  
Museum Forecourt

Tap your toes to the infectious  
music and moves of over 20  
Morris dancing teams performing  
outside the Museum.

Free, no booking required.

## AMERICAN COOL

### Dorothy Parker Takes a Trip

Sun 27 May, 3pm, Oxford

Playhouse, £20/£15. Tickets:

[www.oxfordplayhouse.com](http://www.oxfordplayhouse.com)

A musical and  
dramatic foray into  
the world of Dorothy  
Parker and her era in  
letters, essays, poems,  
and live music. Featuring  
Sarah Gabriel.

EXHIBITION  
EVENT

### The Silent Pianist Speaks

Sun 27 May, 7.30pm, Oxford

Playhouse, £20/£15. Tickets:

[www.oxfordplayhouse.com](http://www.oxfordplayhouse.com)

Celebrate great film  
makers of the silent  
era and the magic  
of the accompanists  
who breathed life and  
sound into the earliest comedies  
and thrillers with Neil Brand,  
musician, writer and broadcaster.

EXHIBITION  
EVENT



# BE THE FIRST TO DISCOVER

**Become a Member today for  
exclusive access to preview  
days and free entry to all  
ticketed exhibitions.**

T 01865 278016

E [membership@ashmus.ox.ac.uk](mailto:membership@ashmus.ox.ac.uk)

**[ashmolean.org/support](http://ashmolean.org/support)**

## HOW TO FIND US

The Ashmolean is located in the centre of Oxford.

### **Public transport**

The train station is approximately 10 minutes' walk from the Museum and has a regular local and national services. The bus station is approximately 5 minutes' walk from the Museum.

# ASHMOLEAN

Beaumont Street  
Oxford, OX1 2PH  
Telephone: 01865 278000

**[www.ashmolean.org](http://www.ashmolean.org)**